

# THERMO WASH

HOT SOFTWASHING

# PURE2O ionic

SYSTEMS  
Pure2o is a brand of Ionic Systems

Pure2o's ThermoWash system is primarily a pure water window cleaning system with a 9kw heater that doubles as a superior chemical saving, more environmentally friendly softwash system.



Softwashing



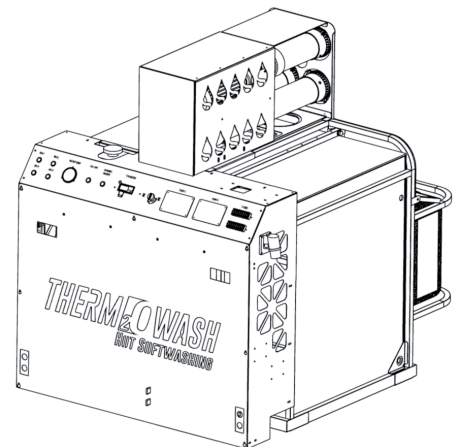
Window Cleaning

## Thermowash™ - Window Cleaning Softwashing System

This compact space saving machine delivers excellent window cleaning results and due to the addition of heat to super-charge your chosen cleaning solution, also delivers the very best softwashing results whilst also saving time and money spent on expensive chemical products.

All other Softwash systems use cold water, often the water is drawn from the mains supply. Firstly, the chemical has to overcome minerals in the water, therefore more chemical than necessary is used, particularly in hard water areas. During the colder months and especially when heavy soilage is encountered the answer is always to add more chemical which then leads to more neutraliser, time and water for rinsing and ultimately more cost.

ThermoWash™ easily achieves the optimum temperature of 55-60c and therefore the effectiveness of pure water and heat combined with the right chemical for the task delivers superior results with less chemical at lower cost and in less time with significantly less risk to the environment.



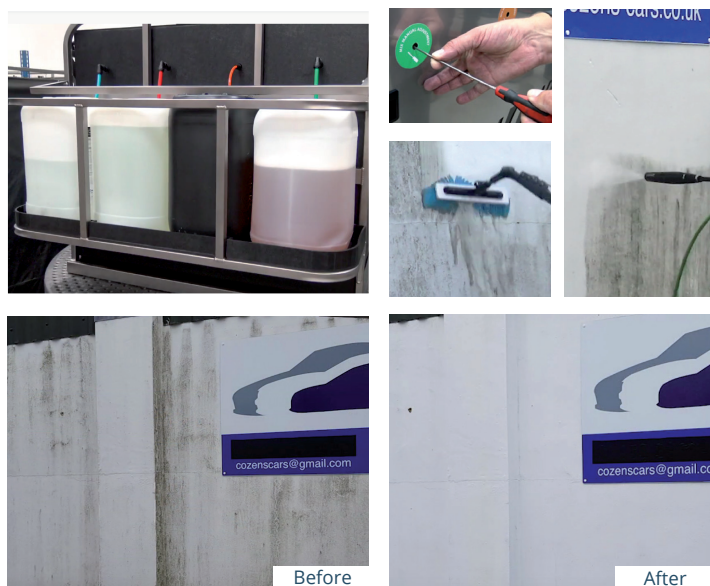
01793 871 386

[www.pure2o.co.uk](http://www.pure2o.co.uk)  
[info@pure2o.co.uk](mailto:info@pure2o.co.uk)

## Softwashing

ThermoWash™ gives the operator the ability to draw upto four separate chemicals or detergents, and set the chemical mixes at the preferred strength for the specified application.

The chemicals are mixed inline with the pure water after the pump, so no chemicals come into contact with the pump, so there is no need for flushing with water to remove chemical.



## Window Cleaning

As a window cleaning system, Thermowash shares many similarities with Pure2o's top of the range Titan system. It's a fully automatic four-stage RO/DI system with 240v mains powered boosted fill.

PFS™ (Periodic Flush System), ROMS™ (Reverse Osmosis Maintenance System) & PDI™ (Peperual De-ionisation) are all standard features on the Thermowash™.



### Specification

| Thermowash™ Machine          |                                    |
|------------------------------|------------------------------------|
| Dimensions                   | H: 1485mm W: 1310mm D: 1510mm      |
| Dry weight                   | 175kg                              |
| Power                        | 12v Battery with On-board charging |
| Re-charge time               | Min 1hr – Max 6hrs                 |
| Fuel                         | Diesel                             |
| Operational                  |                                    |
| Max Temperature              | 60 C                               |
| Over Temp Cut out            | 60 C                               |
| Power                        | 9kw                                |
| Pressure                     | 5 Bar                              |
| Flow Rate                    | 10 lpm – 26 lpm max (adjustable)   |
| Operating noise level @ 1mtr | < 65dB                             |
| Operating noise level @ 5mtr | < 45dB                             |
| Consumables                  |                                    |
| Chemical Tank Capacity       | 4 x 25L                            |
| Output Per Hour              |                                    |
| Softwashing                  | 400 – 1200 m2 per hr               |
| Window Cleaning              | 400 – 800 m2 per hr                |

### Pricing & Options

| Base Price  |               |
|---|---------------|
| Introductory pricing                                    | £12,495 + VAT |
| Options   |               |
| Water Softeners   |               |
| Pressure Washers  |               |
| Bulk rinse module                                       |               |
| 200mtr Remote Control switching                         |               |
| Manual hose reels                                       |               |
| Electric Hose Reels                                     |               |
| Handheld chemical wands 300 & 500mm                     |               |
| Telescopic chemical application poles (various lengths) |               |
| Pressure washing poles (various lengths)                |               |
| Window Cleaning Poles (various lengths)                 |               |
| Constant Flow Sprayers (For Spot Softwashing)           |               |

Discuss Thermowash™ at the UK Roadshow stopping at 13 locations throughout the UK. 10th to the 20th September 2019  
Ask a member of our team for location details



Demo's available  
Book now...



01793 871 386

[www.pure2o.co.uk](http://www.pure2o.co.uk)

[info@pure2o.co.uk](mailto:info@pure2o.co.uk)